

# Fixed Low-Profile Flat Panel Mount

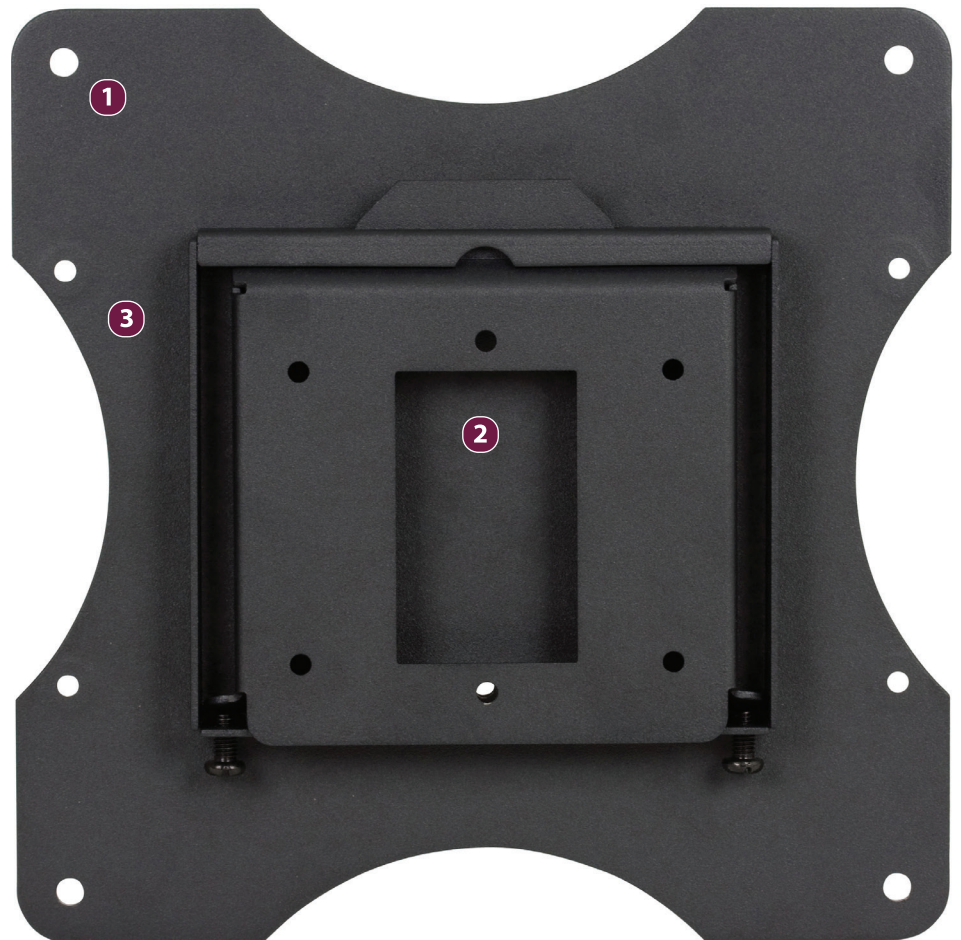
Model: **PRF**

Weight Capacity: 50 lb / 22.7 kg.

## Features

- 1** Simple two-piece design for fast assembly
- 2** Cutout on the wall plate allows for power or signal receptacle
- 3** Low-profile design
  - Square footprint is easily hidden behind flat panel
  - Captive screws secure flat panel to wall plate
  - Universal hardware pack includes innovative universal spacers and M4-M10 screws
  - Includes adapter plate to fit mounting patterns up to 200 x 200 mm

The PRF Fixed Low-Profile Flat Panel Mount offers streamlined presentation by holding displays under 1 in. from the wall. The simple two-piece design allows for rapid assembly, and the integrated cutout on the wall plate allows for power or signal receptacles to be easily routed. The square footprint is easily hidden behind flat panels typically between 10-40 in.



Fits VESA patterns of 75x75, 100x100, 200x100, or 200x200 mm



Cutout on the wall plate allows for power or signal receptacle



Set screws secure flat panel to the wall plate

# Fixed Low-Profile Flat-Panel Mount

PRF

## Specifications

|  |  |  |  |
|--|--|--|--|
| <b>Weight</b><br>4.02 lb.   1.8 kg   | <b>Color</b><br>Black                            | <b>Weight Capacity / Mount</b><br>50 lb.   22.7 kg | <b>Mounting Pattern</b><br>75 x 75 mm (Min) - 200 x 200 mm (Max) |
| <b>Width x Height x Depth</b><br>8.88 x 8.88 x .82 in.   225 x 225 x 21 mm | <b>Total Weight Capacity</b><br>50 lb.   22.7 kg | <b>Warranty</b><br>Lifetime                        |  |

## Packaging

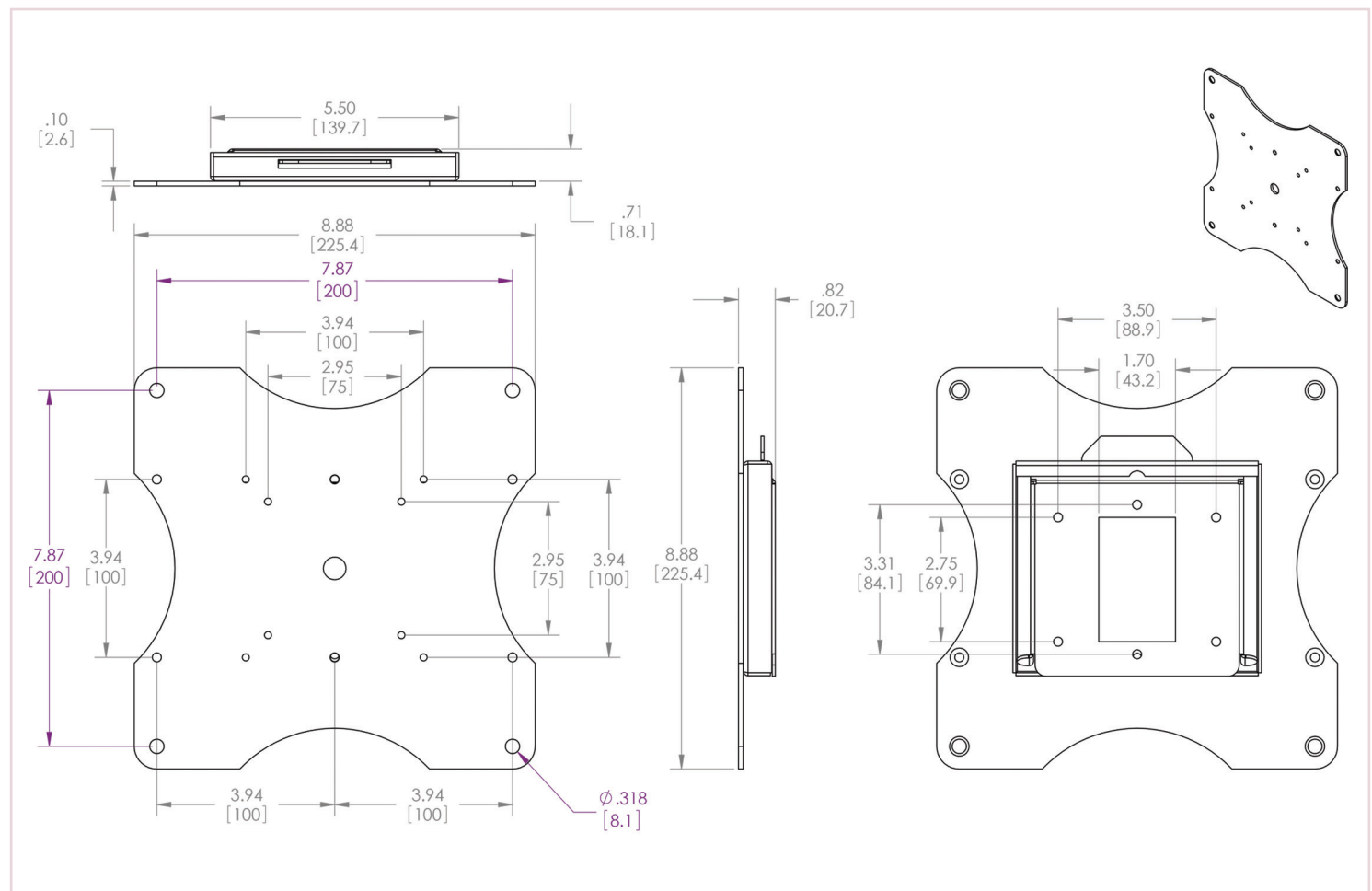
|   |  |
|---|--|
| <b>Width x Height x Depth</b><br>9.25 x 9.06 x 1.38 in.   235 x 230 x 35 mm | <b>Contents</b><br>Wall Mount (x1), UFP-280 Plate (x1), Universal Hardware Pack (x1) |
|---|--|

## Accessories



18 Inch Right-Angle Power Cord  
**PSD-ACR18**

## Architectural Drawing



Specifications subject to change without notice

T: 800.368.9700 | [www.mounts.com](http://www.mounts.com) | 1321 S. State College Blvd., Fullerton, CA 92831 USA



Visit [mounts.com](http://mounts.com) to see the complete line of AV solutions from Premier Mounts, including flat-panel mounts, projector mounts, carts/stands, and a full assortment of accessories.  
© 2014 Premier Mounts. All rights reserved. Rev. 01-14-06

Rev. 01-15-03